



Ford Yacht Club

Race Committee

29500 South Pointe Road

Grosse Ile, MI

2019 FYC Regatta

Skipper's Packet



Attachment A

Ford Yacht Club
Race Committee

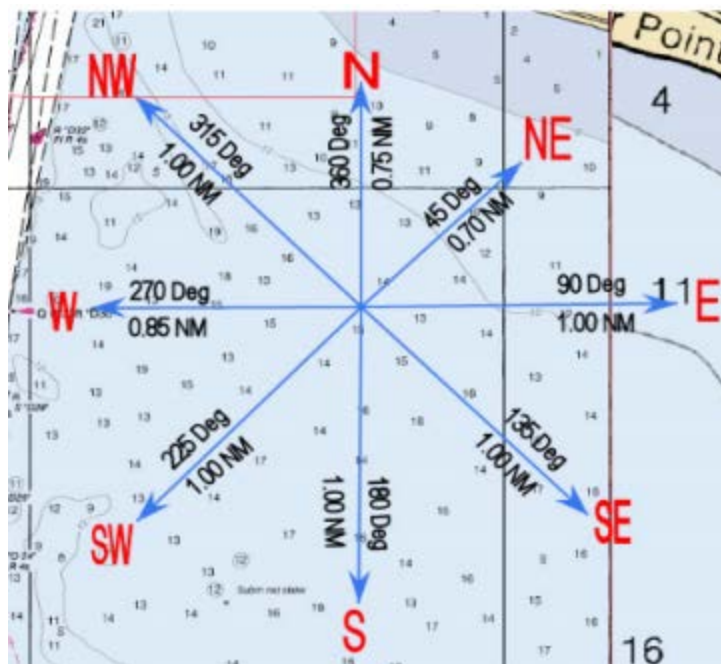
2019 FYC Regatta Courses

Approximate Wind Direction	Spinnaker	Distance	JAM	Distance	R/C Help	to first mark
335-15 (353)	N1 C-Np-Wp-Sp-C	4.9	C-Np-Sp-C	4.1	0 to 4 (light and	
	N2 C-Np-Wp-Sp-Np-C	6.9	C-Np-NWp-Ep-Np-C	6	5 to 8 (diminishing	
	N3 C-Np-Wp-Sp-Np-Sp-C	9	C-Np-NWp-SWp-NWp-SWp-Sp-C	7.8	7 to 14 (steady)	
	N4 C-Np-Wp-Sp-Np-Sp-Np-C	11	C-Np-Wp-SEp-NEp-SEp-NEp-Np-C	10.4	12+ (steady)	353
Wind Direction 10-30	NE1 C-NEp-NWp-SWp-C	4.8	C-NEp-SWp-C	4	0 to 4 (light and	
	NE2 C-NEp-NWp-SWp-NEp-C	6.8	C-NEp-Np-SEp-NEp-C	6.00	5 to 8 (diminishing	
	NE3 C-NEp-NWp-SWp-NEp-SWp-C	8.8	C-NEp-Np-Wp-Np-Wp-SWp-C	7.8	7 to 14 (steady)	
	NE4 C-NEp-NWp-SWp-NEp-SWp-NEp-C	10.8	C-NEp-NWp-Sp-Ep-Sp-Ep-NEp-C	10.3	12+ (steady)	38
Wind Direction 56-105	E1 C-Ep-Np-Wp-C	4.8	C-Ep-Wp-C	4	0 to 4 (light and	
	E2 C-Ep-Np-Wp-Ep-C	6.8	C-Ep-NEp-Sp-Ep-C	6.00	5 to 8 (diminishing	
	E3 C-Ep-Np-Wp-Ep-Wp-C	8.8	C-Ep-NEp-NWp-NEp-NWp-Wp-C	7.8	7 to 14 (steady)	
	E4 C-Ep-Np-Wp-Ep-Wp-Ep-C	10.8	C-Ep-Np-SWp-Sp-SWp-Sp-Ep-C	10.3	12+ (steady)	84
Wind Direction 106-145	SE1 C-SEp-NEp-NWp-C	4.8	C-SEp-NWp-C	4	0 to 4 (light and	
	SE2 C-SEp-NEp-NWp-SEp-C	6.8	C-SEp-Ep-SWp-SEp-C	6.00	5 to 8 (diminishing	
	SE3 C-SEp-NEp-NWp-SEp-NWp-C	8.8	C-SEp-Ep-Np-Ep-Np-NWp-C	7.8	7 to 14 (steady)	
	SE4 C-SEp-NEp-NWp-SEp-NWp-SEp-C	10.8	C-SEp-NEp-Wp-SWp-Wp-SWp-SEp-C	10.3	12+ (steady)	129
Wind Direction 156-195	S1 C-Sp-Ep-Np-C	4.9	C-Sp-Np-C	4.1	0 to 4 (light and	
	S2 C-Sp-Ep-Np-Sp-C	6.9	C-Sp-SEp-Wp-Sp-C	6	5 to 8 (diminishing	
	S3 C-Sp-Ep-Np-Sp-Np-C	9	C-Sp-SEp-NEp-SEp-NEp-Np-C	7.8	7 to 14 (steady)	
	S4 C-Sp-Ep-Np-Sp-Np-Sp-C	11	C-Sp-Ep-NWp-Wp-NWp-Wp-Sp-C	10.4	12+ (steady)	175
Wind Direction 196-244	SW1 C-SWp-SEp-NEp-C	4.8	C-SWp-NEp-C	4	0 to 4 (light and	
	SW2 C-SWp-SEp-NEp-SWp-C	6.8	C-SWp-Sp-NWp-SWp-C	6.00	5 to 8 (diminishing	
	SW3 C-SWp-SEp-NEp-SWp-Nep-C	8.8	C-SWp-Sp-Ep-Sp-Ep-NEp-C	7.8	7 to 14 (steady)	
	SW4 C-SWp-SEp-NEp-SWp-NEp-SWp-C	10.8	C-SWp-SEp-Np-NWp-Np-NWp-SWp-C	10.3	12+ (steady)	219
Wind Direction 254-290	W1 C-Wp-Sp-Ep-C	4.9	C-Wp-Ep-C	4.1	0 to 4 (light and	
	W2 C-Wp-Sp-Ep-Wp-C	6.9	C-Wp-SWp-Np-Wp-C	6	5 to 8 (diminishing	
	W3 C-Wp-Sp-Ep-Wp-Ep-C	9	C-Wp-SWp-SEp-SWp-SEp-Ep-C	7.8	7 to 14 (steady)	
	W4 C-Wp-Sp-Ep-Wp-Ep-Wp-C	11	C-Wp-Sp-NEp-NWp-NEp-NWp-Wp-C	10.4	12+ (steady)	263
Wind Direction 291-334	NW1 C-NWp-SWp-SEp-C	4.9	C-NWp-SEp	4.1	0 to 4 (light and	
	NW2 C-NWp-SWp-SEp-NWp-C	6.9	C-NWp-Wp-NEp-NWp-C	6	5 to 8 (diminishing	
	NW3 C-NWp-SWp-SEp-NWp-SEp-C	9	C-NWp-Wp-Sp-Wp-Sp-SEp-C	7.8	7 to 14 (steady)	
	NW4 C-NWp-SWp-SEp-NWp-SEp-NWp-C	11	C-NWp-SWp-Ep-Np-Ep-Np-NWp-C	10.4	12+ (steady)	308

Please check courses carefully

2019 West Shore SailClub
 Wednesday Night at the Races
 Course Diagram
 (Not to be used for navigation)

C	N42.01.3854	W083.06.6223
E	N42.01.4959	W083.05.3077
NE	N42.02.1653	W083.05.8038
N	N42.02.3802	W083.06.7850
NW	N42.02.0057	W083.07.6806
W	N42.01.2687	W083.07.9782
SW	N42.00.6022	W083.07.4780
S	N42.00.3872	W083.06.4776
SE	N42.00.7527	W083.05.5806













Attachment B

Ford Yacht Club
Race Committee

Starting information

CLASS	CLASS FLAG	Rating
Spinnaker A	Blue	TBD _____
Spinnaker B	Yellow	TBD _____
One Design / Spinnaker C	Green	TBD _____
JAM A	White	TBD _____
JAM B	Purple	TBD _____
Cruising Class	FYC Burgee	ALL

Sample starting sequence per RRS rule 26

Flag signal	Number of sound signals when raised	Number of sound signals when lowered	Description
	1 ↑		Warning Signal. 5 minutes to race start when class flag raised.
	1 P ↑		Preparatory signal. 4 minutes to start when P flag raised. Flag P used or if a starting penalty applies I, Z, Black flag or I over Z is used in place of P.
	1 P ↓	 Long sound	Preparatory signal. P flag removed 1 minute before start. Flag P used or if a starting penalty applies I, Z, Black flag or I over Z is used in place of P.
	1 ↓		Start Signal. Race start when class flag removed.



Individual
Recall
'X'

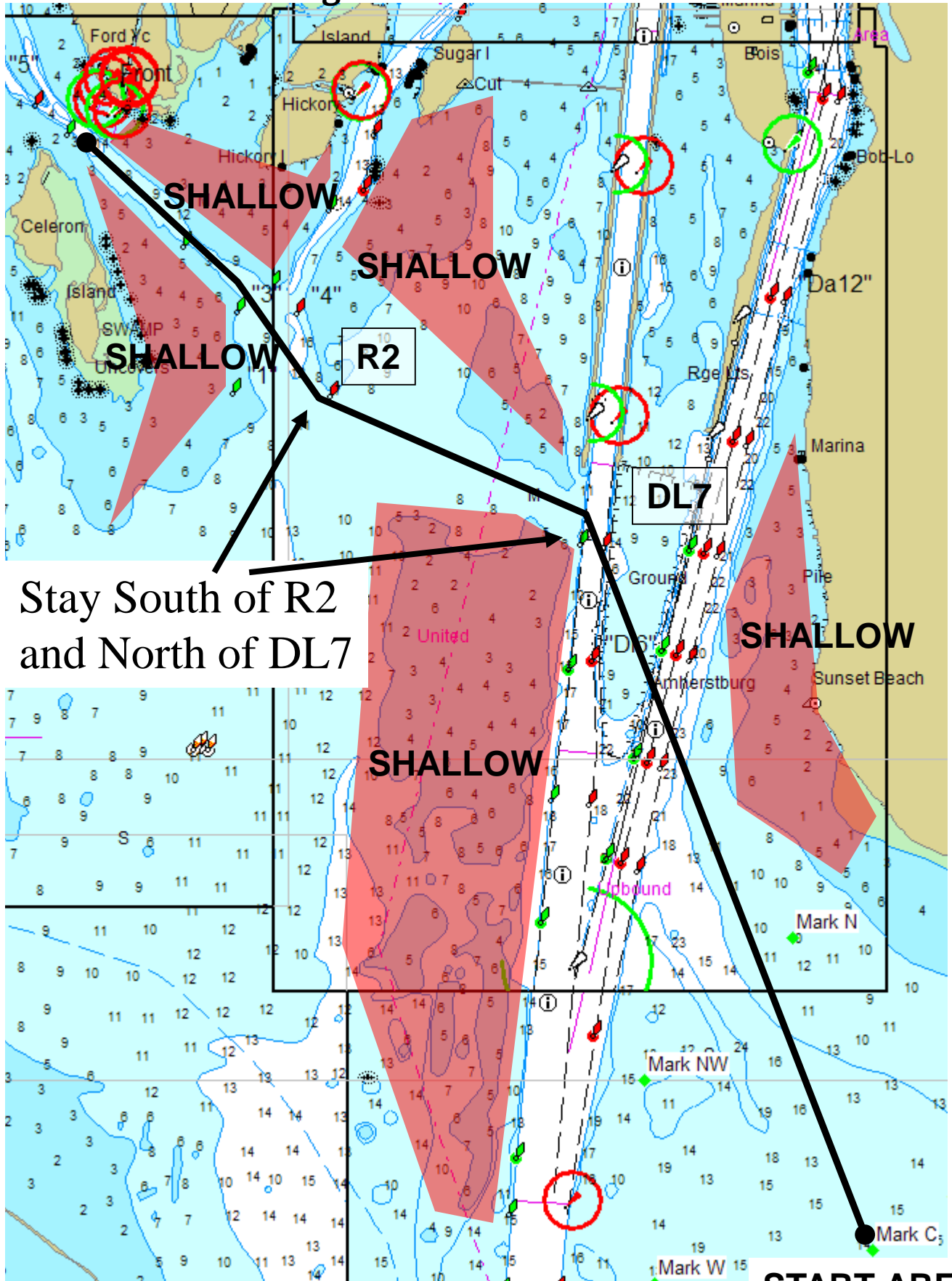
Over Early –
Individual
Recall



General
Recall

Over Early –
General
Recall

Recommendations to get to and from the course



Stay South of R2
and North of DL7

START AREA